



# Public spaces of mobility in Paris, Tokyo and Buenos Aires

## Design, management, and governance for a social and post-pandemic transition

5 July 2022

10.00 - 16.30 (Paris time) | 17.00 - 23.30 (Tokyo time) | 5.00 - 11.30 (Buenos Aires time)

Online | In English

Registration: <https://forms.gle/rDdViyAsmHkkDNwv5>

Contact: [events\\_ffj@ehess.fr](mailto:events_ffj@ehess.fr)

Mobility plays an essential part in improving the quality of life and access to the city's opportunities. However, it contributes to and is affected by planetary emergencies, such as environmental and health crises. Despite all measures adopted until now to reduce those risks, it's now clear that international agreements about climate change will not be met on time. Therefore, cities' spatial organization, technology, and a better understanding of the societal construction and regulation of behaviour must be addressed differently. Three global metropolises, such as Tokyo, Paris, and Buenos Aires, offer contrasting realities. They have specific patterns in space, demographics, cultural attitudes, socioeconomic situations, and institutional organization. But they are also affected by global cycles and health crises, like the last pandemic, from which some common lessons can be learnt. Greener, socially inclusive, and more intelligent urban development, should come faster, undoubtedly creating new conflicts in the short term. But a public conversation, including a multidisciplinary approach to achieve an effective change in space design and management, behaviours and the adoption of new technologies, could offer an achievable roadmap for a different social organization of urban mobility.

# Programme

10.00 | Opening Remarks

**Sébastien LECHEVALIER** (FFJ-EHESS, President), **Pierre-Édouard SOREL** (Michelin)

10.30 | **Presentation of research findings and enriched research questions**

**Andrés BORTHAGARAY** (2022 FFJ/Michelin Foundation fellow, Furban Foundation, City on the Move Institute Latin America)

## Session 1

11:00 | Institutional perspectives: looking for anticipations and new governance devices for a faster pace of change in mobility spaces

Speaker: **Paul LÉCROART** (Institut Paris Region)

Comment: **Marion LAGADIC** (University of Oxford)

11:30 | Mindsets: A conceptual understanding of mobility spaces

Speaker: **Yo KAMINAGAI** (RATP)

Comment: **Antoine GRUMBACH** (Architect urbanist)

12:00 | Exchange and comments

Moderator: **Anne VERNEZ MOUDON** (University of Washington)

**Lunch break**

## Session 2

14:30 | Mindsets: A conceptual understanding of mobility spaces

Speaker: **David MANGIN** (Architect urbanist)

14:50 | Institutional perspectives: looking for anticipations and new governance devices for a faster pace of change in mobility spaces

Speaker: **Natacha AVELINE-DUBACH** (CNRS, Géographie-cités)

Comment: **Andrea GUTIÉRREZ** (University of Buenos Aires)

15:30 | Exchange and comments

Moderator: **Sébastien VELUT** (IHEAL, CREDA)

16.00 | Closing Remarks

**Andrés BORTHAGARAY** (2022 FFJ/Michelin Foundation fellow, Furban Foundation, City on the Move Institute Latin America)

# Introductions and chair

(alphabetical order)



Andrés BORTHAGARAY (2022 FFJ/Michelin Foundation fellow, Furban Foundation, City on the Move Institute Latin America)

Andrés Borthagaray is an architect from Buenos Aires University, has a degree in public administration at ENA in France, and is a doctor from Sorbonne Nouvelle (geography and urbanism). He is president of Furban Foundation and is responsible for the City on the Move Institute (Latin America). He directs a post-graduate program about designing and managing smart and inclusive cities, School of Architecture, Design, and Urbanism, Buenos Aires University. He also has graduate courses on urbanism (FA UP) and, as a guest professor, urban mobility for post-graduate

programs in urbanism (FAUD, UNC; Master DUT, UPC). He has been undersecretary for decentralization, strategic planning, and transportation, Buenos Aires city government. He has developed a line of research about the space of urban mobility, its governance, and the social implications of energetic and digital transitions, particularly in Latin American cities.



Sébastien LECHEVALIER (Professor at EHESS/President of the Fondation France-Japon de l'EHESS)

Sébastien Lechevalier is an Economist and a Professor at EHESS (School of Advanced Studies in the Social Sciences, Paris), specialised in Japanese economy and Asian Capitalisms. He is also founder and president of the Fondation France-Japon de l'EHESS (FFJ). Trained as a labor economist, he has extensively published on various dimensions of the Japanese economy, in comparative perspective, including: “Lessons from the Japanese experience. Towards an alternative economic policy?” (ENS Editions, 2016). His book, *The Great Transformation of Japanese Capitalism* (Routledge, 2014) was published in three languages and has been cited as one of the most influential ones on the Japanese economy published during the last decade.

Other research interests include innovation (*Innovation beyond technology*, Springer, 2019), industrial policies (“Financialization and industrial policies in Japan and Korea: Evolving complementarities and loss of state capabilities” in *Structural Change and Economic Dynamics*, 2019, Vol. 48), and inequalities & redistribution (“Decomposing Preference for Redistribution. Beyond the Trans-Atlantic Perspective”, forthcoming). For more than a decade, he is involved in SASE, as a participant and an organizer.

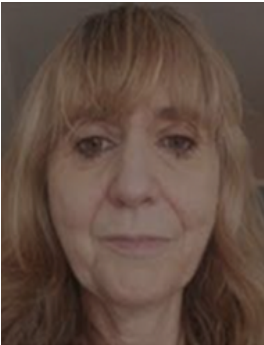


Pierre-Édouard SOREL (Director of Movin'On Development, Michelin)

Pierre-Édouard Sorel started his career with the Renault car company in Istanbul, Turkey, before joining in various product marketing positions in France. He has been working for Michelin for the last 15 years, in the areas of sales, market intelligence, and marketing as a segment manager and entrepreneur to bring new innovations to the market. Since June 2020, he has joined the Movin'On Ecosystem within Michelin to promote sustainable mobility and ecosystem innovations. He received his master's degree in management with a specialization in marketing from the *École des hautes études commerciales de Paris* (HEC Paris) in 1998.

# Speakers

(alphabetical order)



Natacha AVELINE-DUBACH (CNRS, Géographie-cités)

Natacha Aveline-Dubach is permanent research director at CNRS (equivalent professor), affiliated at the Géographie-Cités research unit. Her recent research addresses the financialisation of real estate and land value capture mechanisms applied to railway infrastructure. Lead PI of the French-Singaporean SPACE project which analyses the risk factors and sociospatial patterns of infectious diseases (dengue and COVID 19) in Singapore's urban environment.



Antoine GRUMBACH (Architect urbanist)

Grand Prix National d'Urbanisme 1992. President of Atelier AGTerritoires Emeritus professor, École Architecture de Paris-Belleville. Member of Atelier International du Grand Paris 2008-2016. Author of numerous projects and urban studies (Marseille, Lyon, Bordeaux, Rennes, London, Shanghai, Marrakech), he has built the Maison Suger as well as the Bibliothèque François-Mitterrand metro station.



Andrea GUTIÉRREZ (University of Buenos Aires)

Director, Transport and Territory Programme. Researcher (CONICET, National Council for Scientific and Technical Research). Professor of Economic Geography (Dept. of Geography -FFyL - UBA), of the Master in Environmental and Territorial Policies (FFyL-UBA) and of the Master in Integration Policies and Specialisation in Latin American Integration (Univ. de La Plata).



Yo KAMINAGAI (RATP)

Yo Kaminagai, Delegate for design RATP Projects Department, Delegate for Research & Innovation, digital correspondent. An engineer from the École nationale des ponts et chaussées, he contributes to the transformation strategy of RATP's engineering departments and is a member of the UITP's design and culture committee.



### Marion Lagadic (University of Oxford)

Marion Lagadic is a doctoral student on the DPhil in Sustainable Urban Development at the University of Oxford, under the supervision of Dr. Nihan Akyelken. Her research explores the relations between cycling practices and gender in Japanese cities. In Western Europe and North America, sustainable mobility is far from gender-inclusive: the vast majority of urban cyclists are men. In Japan, the contrary is true: the vast majority of urban cyclists are women. Marion Lagadic's research tackles the gendering of cycling practices in Tokyo, and explores women's cycling practices in the context of their position in the Japanese society.



### Paul LÉCROART (Institut Paris Region)

Paul Lécroart. Senior Urban Planner for the Planning Agency for the Paris Metropolitan Region (France), advising metropolitan & city governments on strategic planning and large transformative projects. Paul leads the Metropolitan Avenues programme on highway transformation in the Grand Paris drawing on experience from New York, Seoul and other cities. He also steers the Metropolitan Nature Pilot-Projects programme in the Paris Region.



### David MANGIN (Architect urbanist)

David Mangin, architect, urbanist, Grand prix de l'urbanisme 2008. Prix France Culture 2004 ". Author of « Mangroves Urbaines », he teaches at the École d'architecture et des territoires de Marne-la-Vallée and at the École de Ponts et Chaussées. He has participated in international consultations concerning Greater Paris and the AIGP and he has developed large urban projects that involve the transformation of large shopping centers and commercial wastelands.



### Sébastien VELUT (IHEAL, CREDA)

Sébastien Velut, Professor of Geography, former director of the Institut de Hautes Études en Amérique Latine and of Centre de recherche et de documentation des Amériques (CREDA). He was a lecturer at the Ecole Normale Supérieure, then a research fellow at the Institut de Recherche pour le Développement before becoming a professor at the University of Paris 3 in 2009.



### Anne VERNEZ MOUDON (University of Washington)

Professor Emerita of Architecture, Landscape Architecture, and Urban Design and Planning. Adjunct Professor Emerita of Epidemiology and Civil and Environmental Engineering. University of Washington, Urban Form Lab.

